

MMI TANK AND INDUSTRIAL SERVICES



DEFINING EXCELLENCE

Safety Moment: Distracted Driving



■ Definition:

- *Distracted driving is any activity that could divert a person's attention away from the primary task of driving. All distractions endanger driver, passengers, and bystanders.*

■ Facts:

- *Reported deaths (2012) – 3,328*
- *Estimated annual injuries – 420,000*
- *At any given daylight moment in America, approximately 660,000 drivers are using cell phones or electronics while driving a vehicle.*
- *Five seconds is the average time your eyes are off the road while texting. At 55 mph you would cover the lengths of a football field essentially blindfolded.*
- *Hands free devices marginally reduce the risk & don't eliminate the risk.*



■ Examples:

- *Phone calls & texting*
- *Eating & drinking*
- *Talking with passengers*
- *Navigation systems & stereo*
- *Reading*
- *Grooming*

■ Prevention:

- *Plan ahead: Music, phone calls, food, navigation, etc.*
- *Ask yourself, “**Are you willing to take a life for the task you’re about to perform?**”*
- *Find a safe place to pull over if you cannot wait.*

About MMI Tank & Industrial Services



- *MMI Tank & Industrial Services (MMI) is a full turnkey industrial contractor serving clients in major markets across North America*
- *At MMI - we design, build, install, and maintain the revenue producing systems our clients depend on*
- *Key Facts:*
 - *Founded in 2007*
 - *Exceptional safety record (0.69 EMR)*
 - *Financially strong*
 - *Staff: 125+*
 - *Engineering staff*
 - *R, S, and U Stamp certified*
 - *30,000 square foot fabrication facility*
 - *UL508A certified panel shop*
- *MMI has the proven ability to work effectively in operating facilities without impacting ongoing revenue producing operations*



Customer Focused Divisions



Industrial Coating



Rigging / Machinery Moving



Capital, Repair, & Maintenance



ASME Pressure Vessels



R, S, and U Stamp Certified



Ring Wall Foundations

Manufacturing / Shop Fabrication (R,U and S Stamps)

- Custom Shop Tanks
- Heavy Plate Fabrication
- API 12F Tanks
- Tank Accessories
- UL142 Tanks
- ASME Pressure Vessels

Industrial Services

- Millwright Services
- Water/Wastewater Services
- Structural Erection
- Transport Services
- Plant Relocation
- Conveyors & Elevators

Industrial Coating

- High Performance Coating
- Surface Preparation & Blasting
- Tanks & Tank Rehabs
- Piping
- Concrete Coating

Tank Construction & Repair

- API 650 Storage Tanks
- AWWA D100 / NFPA Storage Tanks
- Stainless Steel Tanks
- API 653 Tank Repair & Modifications
- Bins - Hoppers - Silos
- Tank Ring Wall & Rock Foundations

Leadership



- **Stacy Pinckard - President**
- **Brent Larson – CFO**
- **Dave Cooper – General Manager**
- **PJ Patton – Safety Director**
- **Trent Pinckard – QA/QC Manager**

- **Business Units**
 - *Millwrights Division Manager: Mike Huber*
 - *Shop Manager: Dave Kolb*
 - *Tank Division Manager: Stace Heckart*
 - *Coating Division Manager: Mike DesPres*
 - *Transportation Manager: Gabe Guevara*
 - *Business Development: Casey Wilstead*

- **Main Phone Number: 602-272-6000**

- **Website: www.mmitank.com**

Safety Philosophy

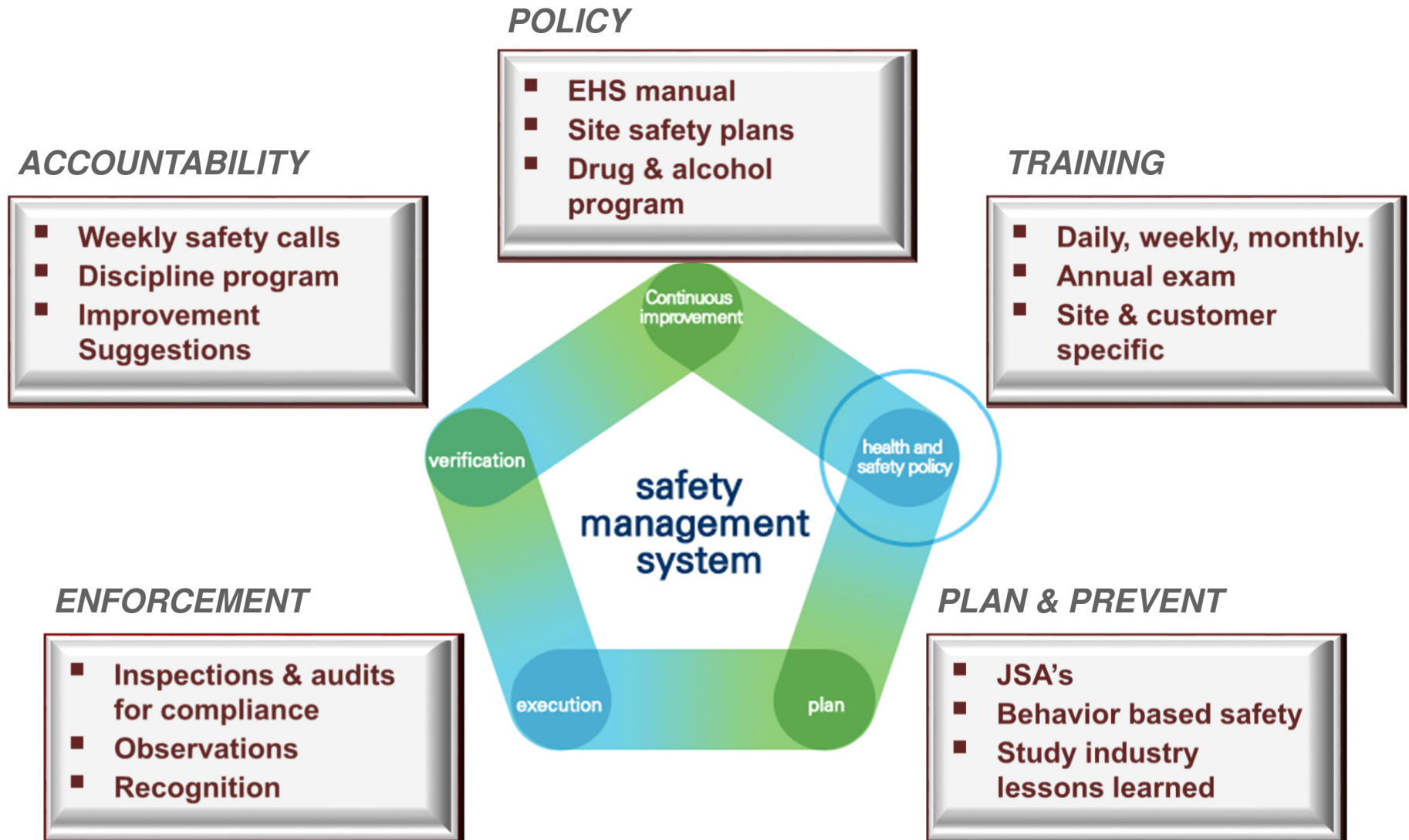


**SAFETY
FIRST**

**SAFETY IS
EVERYBODY'S JOB**

- Safety is MMI's highest priority and a core company value
- Our safety program is designed to create a safe and positive environment for each employee and includes:
 - A full-time Director of Safety who reports directly to the company's President
 - New employee training to include site specific safety requirements
 - Recurring employee training
 - Investment in the right tools & equipment to reduce our exposure to hazards
 - Subcontractor monitoring
 - On-the-job safety training and Job Hazard Analysis to include daily meetings ("tool box talks")
 - Job safety analysis conducted by Western and independent safety consultants and experts
- MMI's is continually evaluating new ways to perform our work more safely.

Safety Program Overview



Quality Control & Craftsmanship



- *Today's business moves too quickly to experience unplanned outages. This philosophy drives our quality control program and provides more reliable service to our customers.*
- *MMI's site foreman's, take pride in their work; not because it's their job, but because their tanks are a reflection of themselves. MMI strives to only hire individuals who share this value.*
- *MMI's strives to build crews to last; most have worked together for many years. The unity, coordination, and collaboration that comes with many years together, helps optimize job safety, quality, and schedule.*
- *Prior to stepping foot on the jobsite, MMI develops a quality plan and an inspection plan that meet or exceed all code & customer requirements.*

Relationships



"I extend my personal thanks to you and your employees for your performance and cooperative business relationship with Excelsior Mining. MMI Tank & Industrial Services is an outstanding company that I will always recommend."

*Cruz Garcia, Sr. Project Manager
Excelsior Mining Company*

Specialized Knowledge and Capabilities



Stainless Steel Wine Tanks



Industrial Equipment



Modular Skids



Relocation of Heavy Machinery/Equipment



Shop Tanks, Process Piping, Pressure Vessels



Field Erected Storage Tanks



Complete Project Lifecycle Capabilities



Engineering, Design & Fabrication

Engineer & Design



In-house Fabrication
and Coating



Shop, Field and Coating

Piping



Millwright services



Production Lines



Platforms & Structures



Foundations



Turnkey Capital
Improvement Projects



ASME Pressure Vessels &
Tanks



Shop Built Tanks
Carbon & Stainless



Field Coating



Maintenance & Repair



True Turnkey Capabilities



- *MMI engineering team is able to integrate designs for every aspect of your project.*
- *Our highly skilled field teams work closely with our engineering group to ensure compliance with design & specification.*
- *When needed, we have relationships with skilled subcontractors; we work closely with them to ensure we meet your needs.*

Let Us Manage Your Project for You



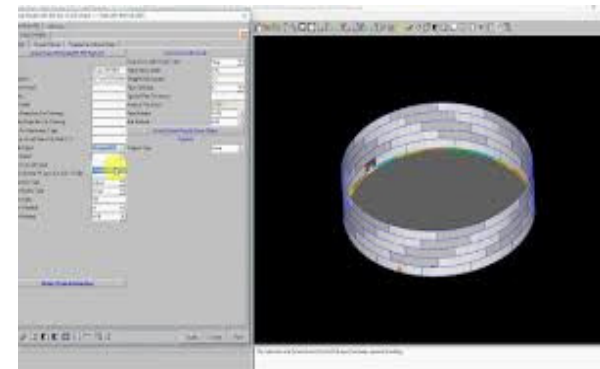
- *MMI offers a single point of contact for your project, no matter how complex.*
- *MMI plans our work in detail, then executes to the plan; adjusting the plan as necessary along the way.*
- *We are honest, straightforward and fair to all our customers- NO EXCEPTIONS. Integrity is a driving force behind our operations.*
- *Communication is critical to ensuring our customer's goals & needs are met. MMI submits weekly progress reports and schedule updates so you know what we know.*
- *Let the MMI's team re-define confidence for you and your project team.*



MMI Tank and Industrial Services has designed a variety of vessels, structures and foundations. MMI can issue PE Stamped vessels and foundation designs in all 50 states.

Engineering Capabilities:

- API 650 Storage Tanks
- API 620 Storage Tanks
- AWWA D100 Storage Tanks
- NFPA Tanks
- Equipment Support Structures
- Foundations
- Equipment Anchorage Analysis
- Pontoon Floating Roofs
- Double Deck Floating Roofs
- Clarifiers & Thickeners
- Legged Tanks & Bulk Bins
- Bulk Bins mounted in structure
- ASME Pressure Vessels



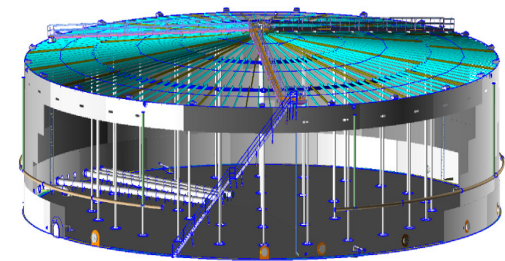
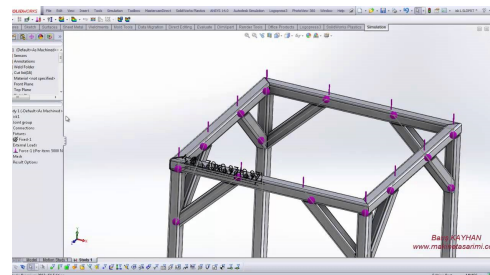
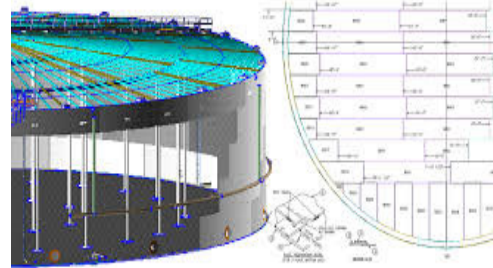
ENGINEERING / DESIGN



MMI utilizes the latest 2D (AutoCAD) & 3D (Solidworks/Inventor) software to develop all required Graphical Documentation customized to the manufactured product. This allows MMI the flexibility to work through the design process with the end user more efficiently. In a sense, MMI can virtually build the product before it is physically built, which ultimately leads to a very successful outcome.

Documentation includes but is not limited to:

- *General Arrangement Drawing*
- *Foundation Drawing*
- *Anchor Placement Drawing*
- *Shop Detail Drawing*
- *Field Assembly Drawing*
- *Field Erection Drawing*



MILLWRIGHT SERVICES



Millwright Capabilities:

- *Precision Alignment*
- *Machinery Leveling*
- *Grouting*
- *Equipment Repairs*
- *Machinery Setup*
- *Machinery Relocation*
- *Stress & Vibration Alleviation*
- *Pedestal & Base Restoration*
- *Foundation Repair & Installation*
- *Maintenance*
- *Shutdowns & Outages*

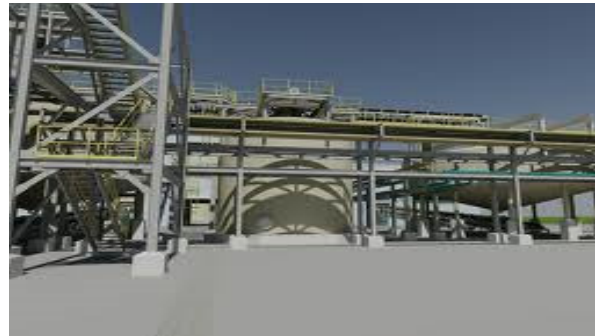


MILLWRIGHT SERVICES



Millwrights Capabilities:

- *Extractions & Demo*
- *Guarding & Railing*
- *MSHA / OSHA Compliance*
- *GMP Compliance*
- *Industrial Equipment*
- *Material Handling*
- *Rotating & Heavy Machinery*
- *Infrastructure*
- *Process Piping*
- *Pump Systems*
- *Equipment installation*



TANK CODES AND STANDARDS



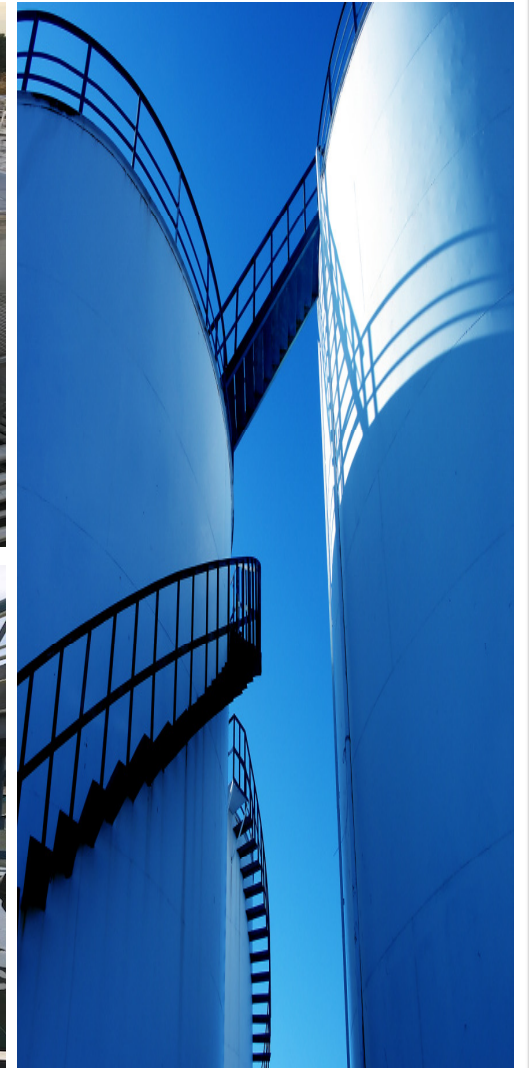
GENERAL CONSTRUCTION STANDARDS & CODES

- *Today's business moves too quickly to experience unplanned outages. This philosophy drives our quality control program and provides more reliable service to our customers.*
- *API 650 – Atmospheric and small pressure/vacuum welded steel tanks for petroleum*
- *API 653 – Storage tank repair for welded steel and riveted steel tanks*
- *API 620 – Large welded low pressure steel storage tanks*
- *API 2000 – Venting atmospheric and low pressure storage tanks*
- *ASME – Pressure Vessel & Heat Exchangers*
- *AWWA - Water & Wastewater Storage*
- *AWS & ASME IX --- Welding specifications*
- *NACE – National Association of Corrosion Engineers*
- *UL, ULC – Underwriters Laboratory*
- *NFPA, STI, etc. – National Fire Protection Association, Steel Tank Institute*
- *ASCE-7 – American Society of Civil Engineers – Minimum design loads for buildings and other structures*

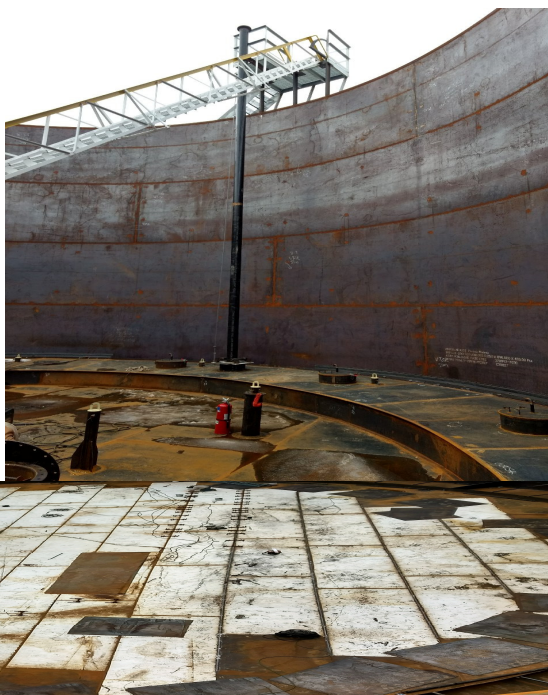
MARKETS SERVED



- *Oil & Gas*
- *Power & Heavy Industrial*
- *Chemical Storage*
- *Mining*
- *Water*
- *Food & Beverage*



FIELD TANK PROJECTS / PETROLEUM / API-650



FIELD TANK PROJECTS / AWWA / NFPA



02/06/19 04:52 PM

FIELD TANK PROJECTS / MINING SITES



TANK RENOVATION & REPAIR SERVICES API-653



Girder Replacement



Soil Replacement



Bottom Replacement



Shell Removal & Replacement



Center Column Replacement / Halo



Door Sheet



Manway Replacement



Floor Replacement



Nozzle Replacement

CIVIL / CONCRETE / FOUNDATION RINGWALL



Soil Improvement's



Aggregate Piers



Tank Pad Undercut



Liner & Leak Detection



Foundation Ringwall



Foundation Ringwall



Liner & Cathodic Protection



Foundation Ringwall



Foundation Ringwall

SHOP TANKS



SHOP BUILD TANKS

- R,U and S Stamps
- Design & Build
- API 650
- AWWA
- NFPA-22
- STI Tanks
- UL Tanks
- Hydro Pneumatic Tanks
- ASME Pressure Vessels
- Silo's
- Hopper's
- Bin's
- Thermal Energy Storage Tanks



Shop / Field Coating & Lining



MMI has a full services, industrial blasting and coating division. Our shop facility is equipped with a 30,000 sq. ft. controlled blasting and priming facility, it allows us to provide our customers with a high quality commercial finishes.

Our field teams are equipped to have the flexibility to mobilize anywhere in the US to meet our client's needs. This enables our field teams to provide top quality coating on new or existing storage tanks and structures.

MMI's capabilities of abrasive blasting and coating services can be provided for any tank fabricator or contractor.

